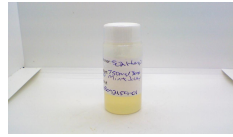




Certificate of Analysis



502 Hemp 750mg Mint Julep

Matrix: Derivative

Accession Number: 081021UD0009

Harvest/Lot ID: 5H08092159-01

Seed to Sale: *

Batch Date: 08/09/21

Batch #: 5H08092159-01

Sample Size Received: 10 ml

Retail Product Size: 10 ml

Ordered: 08/09/21

Completed: 08/14/21

Expires: 08/13/22

Sampling Method: SOP Client Method

Aug 14, 2021 | Commonwealth
Extracts

Louisville, Kentucky,
(504) 419-7527

CANNABINOID RESULTS

Total THC 0.054%	Total CBD 2.952%	Total Cannabinoids 3.127%
-----------------------------------	-----------------------------------	--

	CBC	CBD	CBDA	CBDV	CBG	CBGA	CBN	D8-THC	D9-THC	THCA	THCV
Conc.(wt%)	0.070	2.952	ND	0.026	0.013	ND	0.012	ND	0.054	ND	ND
Conc.(mg/g)	0.700	29.520	ND	0.260	0.130	ND	0.120	ND	0.540	ND	ND
LOQ	0.001	0.0001	0.001	0.001	0.001	0.001	0.001	0.001	0.0001	0.001	0.001

Analyzed by	Date	Instrument used	Analysis Method
TW	08/12/2021	Shimadzu HPLC w/ PDA	

Full spectrum cannabinoid analysis utilizing High Performance Liquid Chromatography with UV detection (HPLC-PDA). (Method: SOP.KY.02.005) sample prep and Shimadzu High Sensitivity Method SOP.KY.02.012 for analysis. LOQ for all cannabinoids is 1 mg/L. % = %w/w = Percent (Weight of Analyte/Weight Product) Total Cannabinoids result reflects the absolute sum of all cannabinoids detected. **Total Potential THC/CBD is calculated using the following formulas to take into account the loss of a carboxyl group during decarboxylation Total THC = THC + (THCa*0.877) Total CBD = CBD + (CBDA*0.877)

This report shall not be reproduced, unless in its entirety, without written approval from Universal Diagnostics. This report is an Universal Diagnostics certification. The results relate only to the material or product analyzed. Test results are confidential unless explicitly waived otherwise. Void after 1 year from test end date. Cannabinoid content of batch material may vary depending on sampling error. IC=In-control QC parameter, NC=Non-controlled QC parameter, ND=Not Detected, NA=Not Analyzed, ppm=Parts Per Million, ppb=Parts Per Billion. Limit of Detection (LoD) and Limit Of Quantitation (LoQ) are terms used to describe the smallest concentration that can be reliably measured by an analytical procedure. RPD=Reproducibility of two measurements. Action Levels are State determined thresholds for human safety for consumption and/or inhalation. The result >99% are variable based on uncertainty of measurement (UM) for the analyte. The UM error is available from the lab upon request. The "Decision Rule" for the pass/fail does not include the UM. The limits are based on F.S. Rule 64-4.310.

Daniel Burriss

Lab Director

State License # 19-05-02P

ISO/IEC 17025:2017

Daniel Burriss

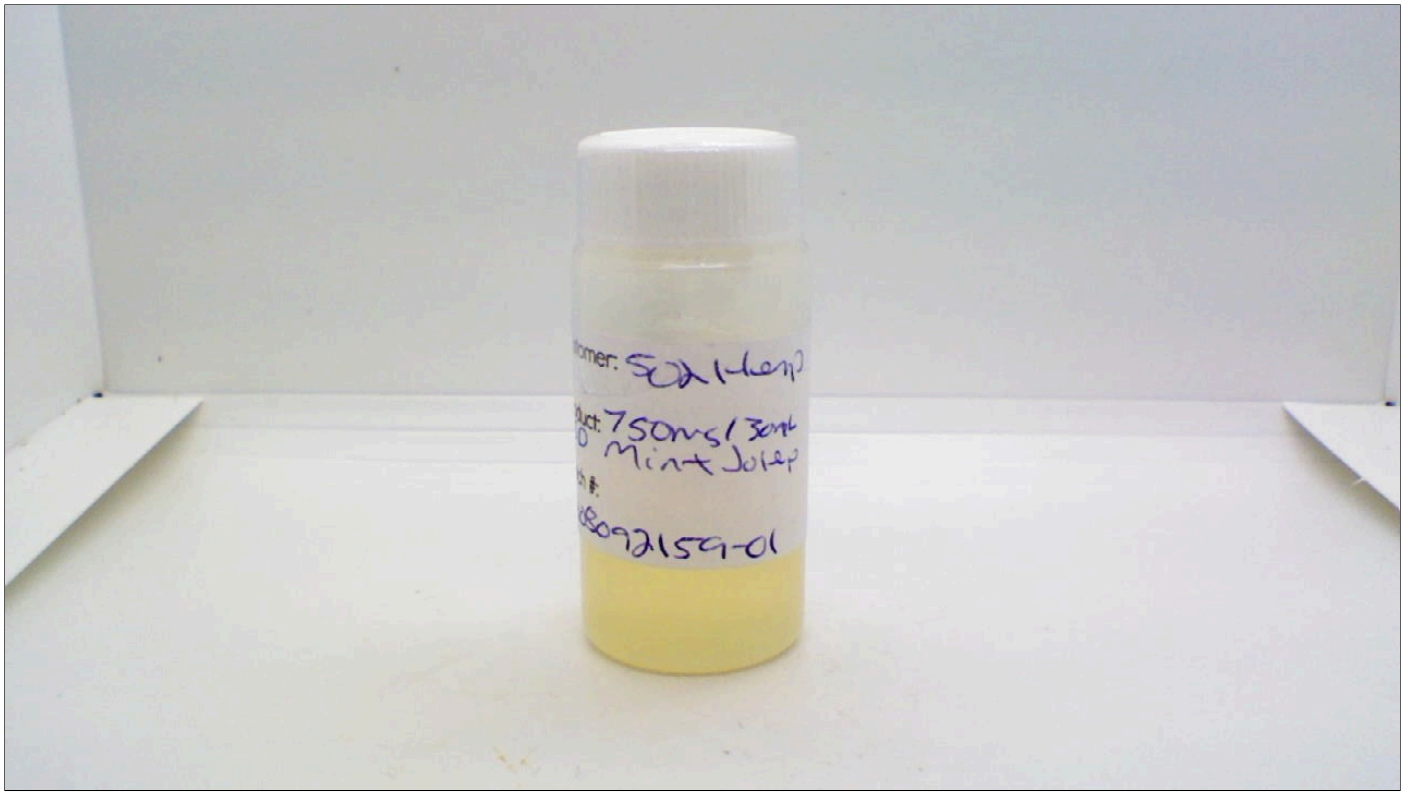
08/14/21



Accreditation 113856

Signature

Signed On



omer: 50x1-6m
uct: 750ms/3ent
Mint Jolep
10-5166092159-01